



# GIS-R2:

Hotspot gateway for businesses with up to 50 users

- ❑ Low cost HSIA gateway
- ❑ Plug and play: easy to use wizard speeds installation
- ❑ Custom login page with client branding; choose from 10 backdrops or create your own design
- ❑ Free access with disclaimer; the legal disclaimer can be edited
- ❑ Controlled access uses codes that are generated and managed on the unit; charge for Internet service or give it free
- ❑ Access code usage reporting to track Internet utilization
- ❑ A firewall protects the business network for PCI DSS compliance
- ❑ Remote configuration
- ❑ QoS overall bandwidth control, with bandwidth settings for each code
- ❑ Content filter blocks access to non-approved websites
- ❑ Timer calendar blocks use when the business is closed
- ❑ Access code API for PoS applications
- ❑ Hotspot user isolation
- ❑ Configuration backup and restore
- ❑ URL and MAC filter
- ❑ Access point failure monitoring
- ❑ Port forwarding for remote access to wireless, CCTV

## Any Business can Provide a Great WiFi Hotspot Internet Service for Guests and Visitors Quickly and Economically with the GIS-R2

### Limitations of Basic WiFi Hotspots

Many businesses offer free wireless Internet for guests and visitors, or charge for the Internet service. Guests and travelers make reservations based on Internet availability because they have gadgets that use wireless Internet: iPhones®, iPod Touch®, laptop computers, and Blackberries®. However, basic WiFi Hotspots can leave guests and travelers frustrated.

Anyone can use the WiFi Hotspot freely as there is no access control to prevent the neighborhood getting free Internet.

No login page is a lost opportunity to advertise and promote the business and show specials with discount coupons to encourage customer loyalty.

One user downloading a large file can make the service slow for everyone else.

Business computers can be hacked and data stolen via the WiFi Hotspot: PCI DSS regulations require that the Hotspot use a second DSL or firewall to protect the PoS.

Users download illegal files, with risk of a lawsuit as file sharing can be detected.

There are no parental controls to block undesirable websites that should not be viewed in public.

The basic Hotspot misses opportunities to improve customer loyalty by using the Hotspot to promote the business and promotional offers.

### We Make WiFi Hotspots Work Better

We offer a very simple and low cost way to add important features for any WiFi Hotspot. The GIS-R2 has been designed to protect your business from the consequences of data theft, and to give your guests and visitors a great Internet service. Our products make great financial sense: low cost products ensure that you get a fast return on investment.

Simple plug and play installation, no computer specialist required. Supports up to 50 concurrent users.

Twelve different login pages are already installed plus custom options are available, and 1000 pass codes control Internet access.

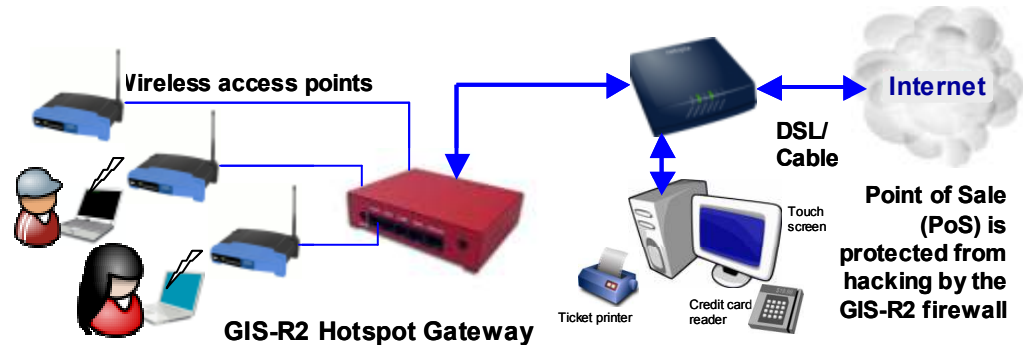
Hackers are blocked with a firewall that prevents Hotspot users accessing the PoS and back office network computers. This means that both business and public network can share one DSL/Cable line.

Web sites can be blocked with the content filter for family friendly web surfing.

Speed control shares bandwidth and prevents guests abusing a shared service.

A timer /calendar activates service during business hours and disables the service when the business is closed.

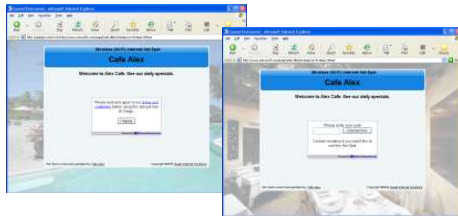
Absolutely no other charges, no monthly fees, percentages of credit card sales, or software charges for additional features.





## Users View

### Login page options



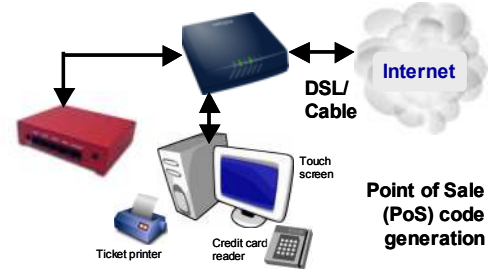
Select from menu or customize

## Custom Login Pages



Create a walled garden

## PoS / PMS Integration



Generate access codes via your PoS

## Configuration

### Setup wizard



The setup wizard is a six-step process completed after installation

### Access code generation



Access codes are generated and managed using a simple display

### Advanced Features



Exclusive features that make GIS gateways very powerful tools

## GIS-R2 Technical specifications:

### GATEWAY FEATURES

- Plug and play with the setup wizard
- Firewall blocks access from LAN to WAN
- Local and remote configuration
- Content filter using OpenDNS
- Download/upload speed control
- Allowed IP and MAC addresses
- Free and controlled Internet access
- Timer/calendar to set availability
- Access point failure monitoring
- Port forwarding for remote access to AP's

### AUTHENTICATION

- Concurrent clients: 50
- Access code database: 1000

### LOGIN PAGE

- Branding via the login page generator
- Ten login pages are preinstalled
- Upload your own background graphic
- Create a custom HTML login page design
- Add custom login page banner advertising
- Disclaimer agreement with built in editor
- Link to business web site home page
- Login page access code generator
- Login code usage reporting
- Create a 'walled garden' using URL bypass
- Library of login page designs available
- Login page simulator on our website
- Optional billing page for CC processing
- Customer data collection application
- Login page backup/restore
- Usage reporting

### API FOR PoS INTERFACE

- PoS integration to sell access codes
- Code fetch/ manage via HTTP

### ETHERNET

- WAN (Internet) RJ-45 10/100
- LAN1-LAN4 (network) RJ-45 10/100

### OPERATION

- Commercial grade equipment suitable for installation in any non-industrial environment

### DIMENSIONS AND POWER

- Enclosure: W 5" x D 4" x H 1.3"
- 12volt 110v/220v supply, 25W

### WARRANTY: 3 years

## Applications where the GIS-R2 has been deployed

- |                  |                 |                  |                      |
|------------------|-----------------|------------------|----------------------|
| - Restaurant     | - Marina        | - Bookstore      | - Student dorms      |
| - Coffee bar     | - Bus station   | - Hospital       | - Church             |
| - Public library | - Train station | - Airport        | - Contractors office |
| - Truck stop     | - Music concert | - Shopping mall  | - Municipal office   |
| - Motel          | - Theater       | - Hotel          | - Flea market        |
| - RV park        | - Golf club     | - Resort         | - Event reception    |
| - Visitor center | - Sports club   | - Internet kiosk | - Multi-tenant condo |
| - Public park    | - Gymnasium     | - Trade show     | - University         |

Call 1-800-213-0106 for further information, or see our web site: [www.guest-internet.com](http://www.guest-internet.com)  
Guest Internet Solutions, Unit C-12, 6073 NW 167 St., Miami, FL 33015, USA. Part of the Fire4 Systems Group

The maximum number of concurrent users for the GIS-R2 is specified with a backhaul circuit of 10 Mb/sec and with users sending/receiving emails and viewing web sites. The maximum number of concurrent users will be reduced when the Internet backhaul is slower than the recommended speed, and when the user traffic includes download/upload of large files.